

Receiver

From

Society
Reference
Address
Phone
Fax
E-mail

Item n° :

60143366

Model :

EVOTRON 40/150 SAN

Pump data

Pressure rating : 10 bar (1000 KPa)

Min. fluid temperature : -10 °C

Max. fluid temperature : 110 °C

Minimum suction head :

Temperature °C 90

Minimum suction head : m 10

Requested data

Flow : 0.57 m³/h

Head : 2.00 m

Fluid : Water, pure

Fluid Temperature : 20 °C

Density : 998.3 kg/m³

Kinematic viscosity : 1.005 mm²/s

Vapor pressure : 100.00 kPa

Hydraulic data (duty point)

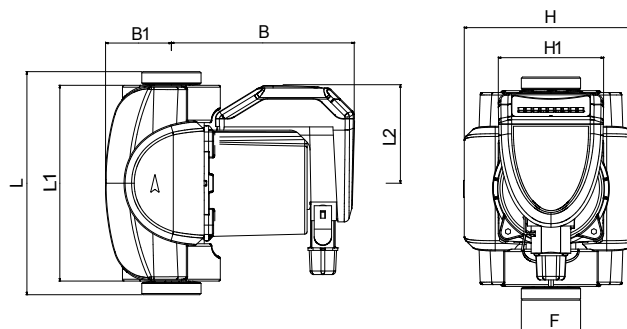
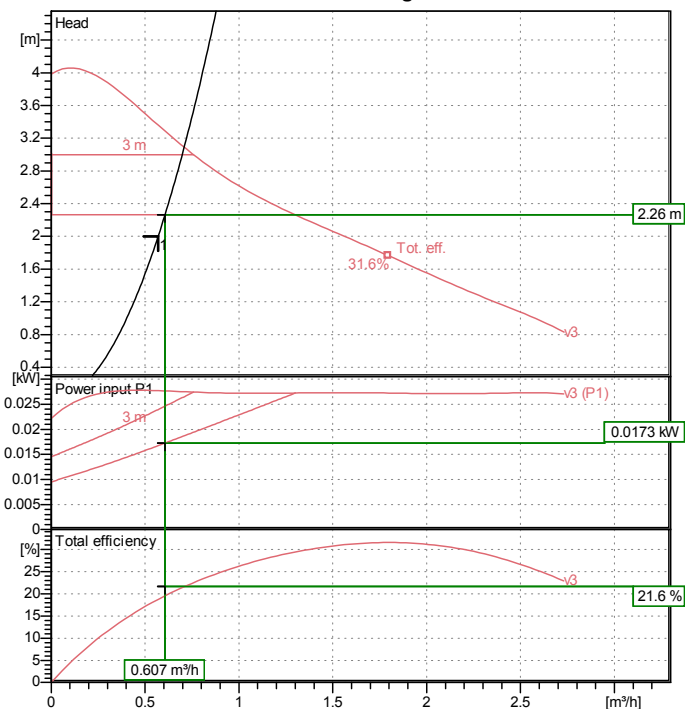
Flow : 0.61 m³/h

Head : 2.26 m

Materials

Pump body	Bronze
Impeller	Ultrason
Motor shaft	Ceramic
Closing flange	Stainless steel
Seal ring	EPDM
Stator jacket	Stainless steel
Terminal box	Poly carbonate

Curve tolerance according to ISO 9906



Motor data

Motor brand : DAB

Power input P1 0.027 kW

Rated speed : 2900 1/min

Rated voltage : 1~ 230 V 50 Hz

Nominal current : 0.26 A

Degree of protection : IP 44

Dimensions in mm

B	147.5	H1	85				
B1	53	L	150				
F	1"1/2	L1	158				
H	140	L2	79.5				

Weight : 3 kg

Pump connection

Suction side	1 " 1/2 G	10 bar (1000 KPa)
Discharge side	1 " 1/2 G	10 bar (1000 KPa)

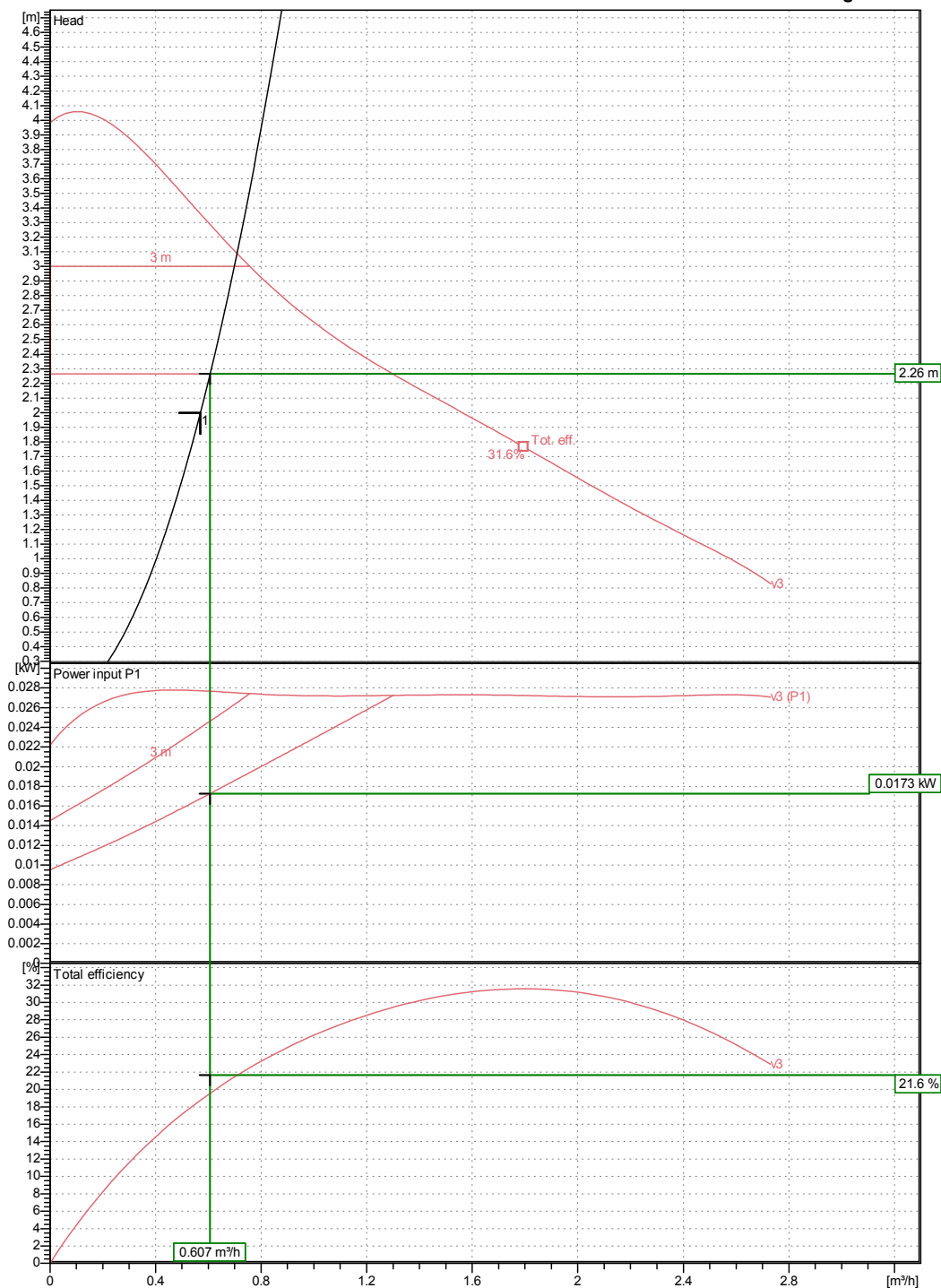
Receiver

From

Society
Reference
Address
Phone
Fax
E-mail

EVOTRON 40/150 SAN

Curve tolerance according to ISO 9906



Hydraulic data (duty point)

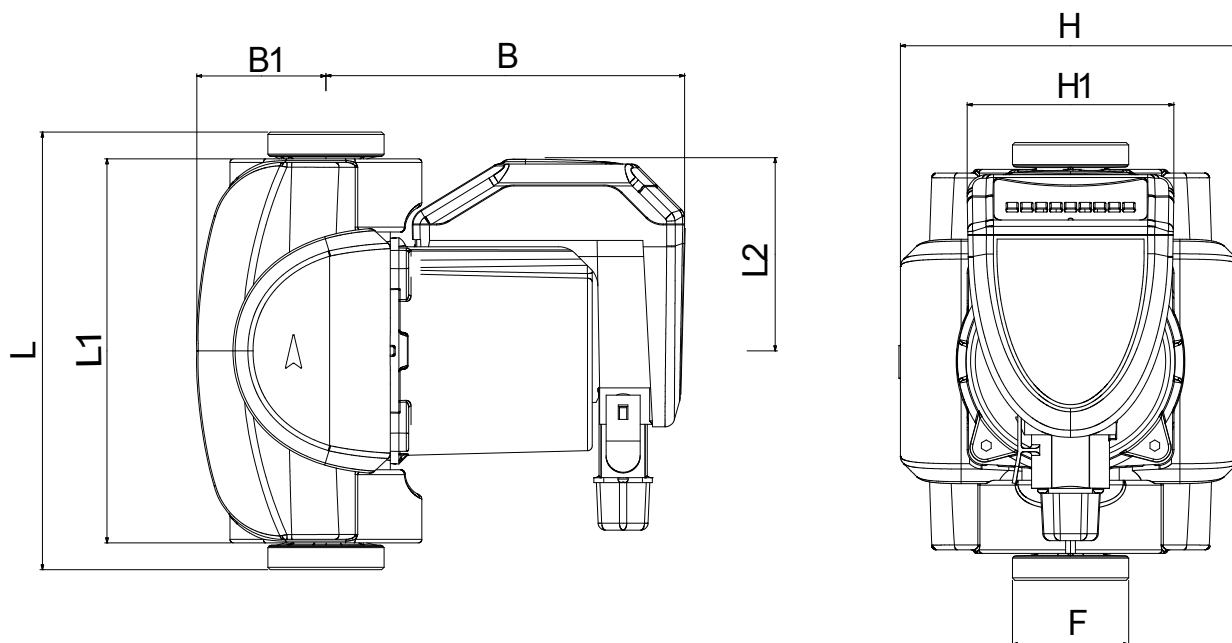
Suction side 1 " 1/2 G 10 bar (1000 KPa)	Discharge side 1 " 1/2 G 10 bar (1000 KPa)	Flow : 0.57 m³/h	Head : 2 m	Rated speed : 2900 1/min
Project	Project ID	Created by	Created on 29/07/2014	

Receiver

From

Society
Reference
Address
Phone
Fax
E-mail

EVOTRON 40/150 SAN



Dimensions in mm

1	B	147.5
2	B1	53
3	F	1"1/2
4	H	140
5	H1	85
6	L	150
7	L1	158
8	L2	79.5

Pump connection

Suction
1 " 1/2 G
10 bar (1000 KPa)

Discharge
1 " 1/2 G
10 bar (1000 KPa)

Project

Project ID

Created by

Created on

29/07/2014